

PRESTO®

For delicious recipes, visit
www.GoPresto.com

6-quart stainless steel Pressure Cooker

- Cooks healthy, flavorful meals, fast and easy.
- Foods cook 3 to 10 times faster than ordinary cooking methods.
- Luxurious stainless steel with tri-clad base for quick, even heating.
- 12-year limited warranty.



High speed
 pressure cooking
 saves time,
 energy, and money!

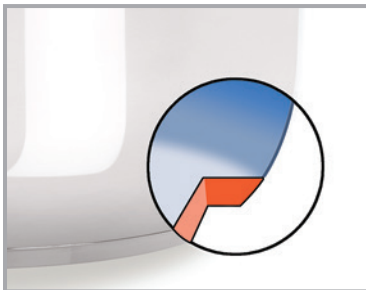


Examples of Energy Savings of this Presto® Pressure Cooker vs. an Electric Oven
Kilowatt hours (kWh)

Item	Electric Oven	Pressure Cooker	Savings
PORK ROAST (3 lbs.)	~2.5 kWh	~0.8 kWh	59% SAVINGS
BEEF ROAST (2 1/4 lbs.)	~2.5 kWh	~0.8 kWh	61% SAVINGS
WHOLE CHICKEN (3 1/2 lbs.)	~2.5 kWh	~0.9 kWh	54% SAVINGS
BAKED BEANS	~2.5 kWh	~0.5 kWh	81% SAVINGS
CUSTARD	~2.5 kWh	~0.7 kWh	78% SAVINGS



- **The smart choice** for preparing today's lower calorie foods. Chicken, fish, and vegetables cook to perfection fast. Helps tenderize leaner cuts of meat.
- **Pressure regulator** automatically maintains the proper cooking pressure.
- **Menu guide** on handle for popular cooking times. Cooker works on electric, smooth-top, gas, and induction ranges.
- **Cover lock indicator** shows at a glance when there's pressure inside the cooker.
- **Multiple protective features** help assure safe operation. Independent pressure release devices prevent excess buildup and a cover lock keeps the cooker from being opened until pressure is safely reduced.



Tri-clad base features a layer of aluminum between two layers of stainless steel.



Includes a helper handle, stainless steel rack, and 64-page instruction and recipe book. Dishwasher safe.

	Liquid capacity: 6 quarts (5.7 liters)	Stock No. 01365			
Out of Box:	<i>Width</i>	<i>Depth</i>	<i>Height</i>	<i>Weight</i>	
	17.56"	9.62"	8.43"	5.21 lb	
Single Carton:	UPC# 075741013657				
<i>Qty</i>	<i>Cube</i>	<i>Width</i>	<i>Depth</i>	<i>Height</i>	<i>Weight</i>
1	.58	10.56"	10.56"	9.06"	6.35 lb
Master Pack:	UPC# 10075741013654				
<i>Qty</i>	<i>Cube</i>	<i>Width</i>	<i>Depth</i>	<i>Height</i>	<i>Weight</i>
2	1.17	21.12"	10.56"	9.06"	12.70 lb