

PRESTO®



2023 Product Catalog

- | | | | |
|----|--|----|------------------------------|
| 2 | Electric and Digital Skillets | 11 | Pressure Canners |
| 4 | Popcorn Poppers | 13 | Canner Accessories and Parts |
| 6 | Microwave products, Waffle Maker,
Coffee Makers | 14 | Dehydrators and Accessories |
| 8 | Nomad® traveling products | 15 | Convenience Appliances |
| 9 | Slicer/Shredders, Pizza Oven | 18 | Pressure Cookers |
| 10 | Multi-cookers | 19 | Electric Griddles |
| | | 22 | Deep Fryers |

➤ Presto® Electric Skillets



Presto® Electric Skillets are great for family meals and easily double as a buffet server when entertaining. Roast, fry, grill, stew, bake, make casseroles and one-dish meals—all with the convenience of a nonstick surface, inside and out.

- Virtually warp-proof heavy cast aluminum pan.
- High sidewalls for added cooking and serving capacity.
- Control Master® heat control maintains desired temperature.
- Fully immersible with the heat control removed.

**16-inch Electric Skillet
with glass cover**
120 volts AC, 1500 watts
Stock No. 06852

Tempered glass cover.

**11-inch Electric Skillet
with glass cover**
120 volts AC, 1000 watts
Stock No. 06626



11-inch Electric Skillet
120 volts AC, 1000 watts
Stock No. 06620

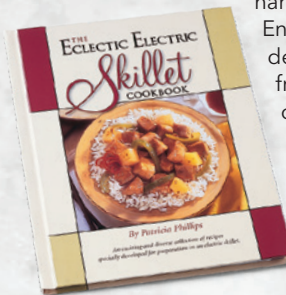
*EverNu™ high dome covers won't
dent, warp, peel, or bend.*



16-inch Electric Skillet
120 volts AC, 1500 watts
Stock No. 06850

The Eclectic Electric Skillet Cookbook
Stock No. 59-439

Expand your recipe repertoire and experience the diversity and convenience of electric skillet cooking with this 160-page hardcover cookbook. Enjoy more than 200 delicious recipes—from appetizers to desserts and everything in between, plus full-color photos and detailed instructions.



The **low-profile design** of the Slimline™ Skillet makes it ideal for buffet-style serving and saves on storage space!

- Tempered glass cover with stay-cool handle.
- **High sidewalls** provide extra cooking and serving capacity.



This premium electric skillet features a **ceramic nonstick** surface, inside and out. Great for breakfast, family dinners, and entertaining.

- **High sidewalls** provide extra cooking and serving capacity.
- Tempered glass cover with stay-cool handle.

16-inch Electric Skillet with ceramic nonstick surface
120 volts AC, 1500 watts
Stock No. 06856



**16-inch Electric Slimline™
Skillet with glass cover**
120 volts AC, 1500 watts
Stock No. 06858



TUXEDO®

digital precision skillet multi-cooker

The skillet **REIMAGINED!**

- Pan Fry
- Sauté
- Roast
- Braise
- Simmer
- Poach
- Steam
- Bake
- Sous Vide
- Make Yogurt
- Proof Dough
- Desserts



**Tuxedo® digital precision
skillet multi-cooker**
16-inch size
120 volts AC, 1500 watts
Stock No. 06854



**CERAMIC
NONSTICK
SURFACE**



**Tuxedo® digital precision
skillet multi-cooker**
12-inch size
120 volts AC, 1100 watts
Stock No. 07118

Digital Heat Control
with large LED display for
precise heat regulation.



Removable **multi-purpose rack** for
steaming, baking, sous vide, and
making yogurt.

- Ultra-durable **ceramic nonstick surface** inside and out for stick-free cooking and easy cleanups. PFOA and PTFE free.
- Select temperatures in one-degree increments from 100° to 205°F and five-degree increments from 205° to 400°F.
- **Extra-high sidewalls** for added cooking and serving capacity.
- Tempered **glass cover with silicone rim** and easy-grasp handles. Great for entertaining!
- Doubles as a buffet server. Keeps food at precise serving temperatures for up to 24 hours.
- **Delicious recipes included** for pan frying, baking, braising, poaching, sous vide, yogurt, desserts and more.
- Fully immersible with the heat control removed.

➤ Popcorn Poppers

Pop a family-size batch of popcorn in this big 6-quart capacity popper. The **motorized, scalloped stirring arm** distributes corn evenly, resulting in virtually no unpopped kernels.

- Multi-point cover venting assures crispy popcorn.
- Butter melter distributes butter as popcorn pops.
- Butter melter lid snaps over vents allowing cover to double as a serving bowl.
- Ceramic nonstick popping surface cleans easily.
- Base nests inside cover for compact storage.

**CERAMIC
NONSTICK
SURFACE**

**Orville Redenbacher's*
Stirring Popper by Presto**
120 volts AC, 900 watts
Stock No. 05204



This special popper **pops like a fountain!** Popcorn flows into the cover as it pops using hot air, not oil, for popping. It makes up to 20 cups of popcorn in about 3½ minutes with virtually no unpopped kernels.

- Stainless steel restrictors help to optimize popping performance.
- Vented cover assures crispy popcorn.
- Lid snaps over vents allowing cover to double as a serving bowl.
- Base and cover simply wipe clean.
- Base nests inside cover for compact storage.

**Orville Redenbacher's* Fountain®
Hot Air Popper by Presto**
120 volts AC, 1275 watts
Stock No. 04868



➤ Healthy air-popped corn

Presto® hot air poppers offer superb popping performance with virtually no unpopped kernels. They pop with hot air, not oil, for a delicious, low-fat treat using regular or gourmet popcorn. Pop up to 18 cups in less than 2½ minutes. That's faster, healthier, and more economical than most microwave bag popcorn.

- Chute directs popcorn into your bowl.
- Measuring scoop doubles as a butter melter.
- Hot air popped popcorn is all natural with no artificial flavors or added salt and zero grams of saturated fat per serving.
- Base and cover simply wipe clean.
- Built-in cord wrap.



PopLite® hot air popper
120 volts AC, 1475 watts
Stock No. 04863



PopLite® hot air popper
120 volts AC, 1475 watts
Stock No. 04820

* Orville Redenbacher's® is a registered trademark of ConAgra Foods RDM, Inc., used under license.

the aqua line

The PopLite® Plus hot air popper's **patent pending design** provides **enhanced performance** outpopping other leading poppers with virtually no unpopped kernels. It pops up to 18 cups of gourmet corn in about 2½ minutes—faster, healthier, and more economical than most microwave bag popcorn. It pops with hot air, not oil, for a low-fat, **heart-healthy treat!**

- Push-button on/off switch.
- Built-in butter melter/measuring cup.
- Butter melter with metal cup for increased efficiency.
- Integrated cord wrap for easy storage.
- Pops without oil so base and cover simply wipe clean.



PopLite® Plus hot air popper
120 volts AC, 1470 watts
Stock No. 04867

“My munch™ is not only great for popping just the right amount of popcorn, it's also amazingly easy to store.”



PopLite® my munch™ hot air popper
120 volts AC, 970 watts
Stock No. 04811

Personal-size PopLite® my munch™ hot air popper is great for **snacking and portion control**. It pops up to 8 cups in about 2 minutes with virtually no unpopped kernels.

- Vented cover assures crispy popcorn.
- Cover with handle doubles as a serving bowl—just snap on the lid and flip.
- Pops without oil so the base and cover simply wipe clean.



- Base with built-in cord wrap nests inside the cover for compact storage.

▼ Microwave Multi-Popper

Orville Redenbacher's® PowerPop® microwave multi-popper by Presto features **special PowerBase™ and PowerCup® concentrators** that combine to focus microwave energy so effectively that virtually every kernel pops. It pops up to 3 quarts of delicious popcorn in as little as 2½ minutes.

- **Pops with or without oil** for popcorn the way you like it!
- PowerCup® concentrator can be used for multiple batches; a supply is included. Concentrators also sold separately.
- Works in microwave ovens with cavity sizes over 6½" H x 10" W.
- Bowl and lid are immersible and dishwasher safe. Base wipes clean.



Genuine PowerCup® microwave concentrators
1 bag (8 concentrator cups)
Stock No. 09964

Orville Redenbacher's® PowerPop® microwave multi-popper by Presto
Stock No. 04830



Make crisp, delicious bacon in your microwave!

PowerCrisp™ cooks **leaner and healthier** than pan-fried because fat drips away from the bacon and into the tray. **Makes up to 12 strips of bacon**, crisp or tender, with no messy spatters on counter or stovetop.

- Fully immersible and dishwasher safe.
- Removable cooking racks stack in tray for compact storage.

PowerCrisp™ microwave bacon cooker
Stock No. 05101



Waffle Bowl Maker



A different kind of waffle bowl—**thick, fluffy, and tender** because it's a real waffle. The Belgian waffle bowl maker bakes a perfect 4-inch waffle bowl.



Add butter and syrup, or make elaborate breakfasts by filling with eggs, sausage, and hash browns. Great with fresh fruit, yogurt, and ice cream. For something different, fill with fried chicken for a delicious hand-held waffle taco.

- Nonstick grids assure easy removal of waffle and quick cleanup.
- No special batter needed. Use store-bought waffle mixes or make your own. Recipes included.
- Compact to store.



Pour in waffle batter, close cover, and bake.



Belgian Waffle Bowl Maker
120 volts AC, 750 watts
Stock No. 03500



Insert single serve pack.



Or, use the refillable MyJo® cup with ground coffee.



Pump to brew.

Single-cup coffee maker—perfect for home, work, school, travel, camping.

Enjoy the convenience of a single cup coffee maker without the high cost! **Use your favorite single serve packs** of coffee, tea, or hot cocoa. Fill the reservoir with heated water or heat the filled reservoir in a microwave. Place the assembled MyJo® coffee maker on top of your coffee mug, then pump to brew. The cover with pump compresses air inside the reservoir to push water through the refillable cup or single serve pack.

- Water reservoir detaches from base for filling and heating.
- Brews a 6-, 8-, or 10-ounce serving.
- Bonus refillable MyJo® cup lets you brew your favorite ground coffee too!
- Works with most travel mugs and coffee cups.
- Slip- and heat-resistant silicone grip.

MyJo® single cup coffee maker
Stock No. 02835



➤ Coffee Makers

Brew as fast as a cup a minute in this luxurious stainless steel coffee maker. Its **traditional stainless design** is easy to clean and offers long-lasting beauty.

- Signal light indicates when coffee is ready to serve.
- Stainless steel construction including the filter basket and perk tube.
- Easy-pour spout.
- Available in 6- and 12-cup models.

12-cup Stainless Steel Coffee Maker

Makes 2 to 12 cups
120 volts AC, 800 watts
Stock No. 02811



6-cup Stainless Steel Coffee Maker

Makes 2 to 6 cups
120 volts AC, 500 watts
Stock No. 02822



Enjoy flavorful, frothy nitro cold brew coffee on tap

in your refrigerator at home with the Nitro Coffee Dispenser! Nitrogen-infused cold brew adds smooth texture, delicate flavor, and rich, creamy head. Charge using either nitrous oxide or pure nitrogen cartridges (sold separately). Filling and storage accessories included.

Nitro Coffee Dispenser **Stock No. 02939**

- Dispensing system includes: two-liter stainless steel mini-keg, nitrogen cartridge holder, and exclusive rotating spout.
- Fits in most refrigerators. Rotating spout swings up for drip-free storage.
- Fill keg with up to 48 ounces of cold brew and charge using nitrous oxide or pure nitrogen cartridges.
- Gentle-touch push-down tap.

The timeless percolator process brews the perfect pot of coffee!

The Presto® **Cordless-serve Stainless Steel Coffee Maker** brews rich, robust percolator coffee as fast as a cup a minute, then keeps it piping hot automatically. Unlike other methods, water percolates and recirculates multiple times for a **more aromatic, intense coffee**.

- Stainless steel pot with modern, matte-black finish.
- Brews 4 to 12 cups of flavorful coffee.
- Light signals when coffee is ready to serve.
- Lift pot from power base for cord-free pouring.
- Stainless steel construction, including perk tube and basket, assures easy cleaning.
- Power cord wraps in base for compact storage.

Cordless-serve 12-cup Stainless Steel Coffee Maker

120 volts AC, 800 watts
Stock No. 02815



➤ Nomad® Traveling Products



The **easy way to transport** prepared food to most anywhere and heat it once you arrive. The Nomad® traveling food warmer conveniently heats soups, leftovers and more in a Mason jar so you can **enjoy hot, flavorful lunches at work, school, or home.** Pack your lunch in the mason jar and plug in the warmer at work. It gently heats to serving hot in about two hours.



**Nomad® Mason Jar
Traveling Food Warmer**
120 volts AC, 60 watts
Stock No. 06015

(utensil not included)

- Also works **on-the-go** in vehicles with an AC power source.
- Utensil storage band holds spoon, fork, or both.
- Twist-on cover **seals tight to prevents spills** in your bag or car during commute.
- Snap-open storage in cover for transporting crackers or condiment packets.
- Power light illuminates when plugged in.
- Swing-up handle and built-in cord-wrap.
- Fits wide-mouth, pint-size Mason jar. One included.
- Jar removes for easy cleaning in sink or dishwasher.



NOMAD®

ready to travel

Slow cook foods, then take them on the road with confidence in the Nomad® traveling slow cooker. The swing-up handle and locking lid make carrying easy and provide **spill-proof transportation**. Cool-touch housing and a hinged, removable cover with see-through window make this slow cooker rugged and ready for travel.

- **Ideal for buffet-style foods at home or away**—pulled pork, chicken wings, sloppy joes, hot beef and more. Make soups, stews, casseroles, chicken, and roasts.

- Detachable utensil holder with silicone cord secures utensil* during transport and doubles as a spoon rest when serving.
- Slow-cook settings for high, low, and keep warm.
- Removable nonstick cooking pot is fully immersible.
- Built-in cord storage.

*spoon not included



Rugged, wide-profile slow cooker



**6-quart Nomad®
Traveling Slow Cooker**
120 volts AC
Stock No. 06011



**8-quart Nomad®
Traveling Slow Cooker**
120 volts AC
Stock No. 06012

➤ Slicer/Shredders



The original SaladShooter® electric slicer/shredder is conveniently sized to slice and shred vegetables, fruits, cheese, nuts and more. Just point and shoot to make delicious salads, soups, pizzas, tacos, and desserts. It even chops nuts, grates chocolate, and makes bread, cookie, and cracker crumbs.



- Interchangeable cones for slicing and shredding slip right in.
- Motor base wipes clean; all other parts are dishwasher safe.
- Compact for easy storage.

SaladShooter® electric slicer/shredder
120 volts AC
Stock No. 02910

Takes the work out of slicing and shredding!



This kitchen essential will slice and shred a wide array of vegetables, fruits, and cheese. **Just point and shoot for delicious salads, soups, desserts and more.** Shred potatoes for hash browns and cheese for pizzas and tacos. The Professional SaladShooter® makes super shreds for stir-fry and coleslaw and ripple cuts for beautiful vegetable trays. It even chops nuts, grates chocolate, and makes bread, cookie, and cracker crumbs.

- Interchangeable cones for thick slices, ripple slices, medium shreds, and super shreds. Funnel guide for directing ingredients.
- Large food chamber holds whole potatoes.
- Adjustable food guide adapts to large or small loads.
- Motorized base wipes clean; everything else is dishwasher safe.

Professional SaladShooter® electric slicer/shredder
120 volts AC
Stock No. 02970

The unbelievable Pizzazz® Plus Rotating Pizza Oven

Pizzazz® Plus rotating pizza oven features an open-oven design that bakes frozen, homemade, or take-and-bake pizzas with thin or rising crust to perfection! It also prepares frozen convenience foods—chicken wings and nuggets, jalapeño poppers, pizza rolls, fish fillets, egg rolls and more. Top and bottom heating elements are controlled separately.

- Rotating tray continually turns to assure even baking.
- Select top, bottom, or both heating elements for perfect results.
- Timer signals the end of cooking time; shuts off heating elements automatically.
- Recommended for 7- to 12-inch pizzas.
- Nonstick pan is removable for easy cleanup and compact storage.



Pizzazz® Plus rotating pizza oven
120 volts AC, 1235 watts
Stock No. 03430



Frozen, deli, or homemade—perfect every time!

➤ Multi-cookers



Kitchen Kettle™ XL for deep frying, steaming, boiling and more!

Coming in at **twice the size** of our classic Kitchen Kettle™, this party-pleasing XL multi-cooker is ideal for soups, stews, ham, roasts, seafood, rice, vegetables, pastas, and casseroles. Deep fry up to 10 cups for jumbo batches of chicken, fish, fries, and doughnuts.

- Nonstick surface inside and out.
- **Large diameter cooking surface** for easy browning in one pan.
- Multi-use basket hooks onto rim of multi-cooker for draining.
- Heavy cast aluminum base with tempered glass cover.
- Control Master® heat control maintains cooking temperatures automatically.
- Fully immersible and dishwasher safe with heat control removed.



*Also helpful for
blanching foods for
canning, freezing, and
dehydrating.*



10-quart Kitchen Kettle™ XL
multi-cooker/steamer
120 volts AC, 1800 watts
Stock No. 06009

HUGE Food Capacity!
2X THE SIZE of our classic
Kitchen Kettle™
multi-cooker/steamer

Versatile!

steam
stew
boil
roast
deep fry



This family-size 6-quart multi-cooker is great for making soups, stews, and casseroles, as well as steaming vegetables and boiling pasta. It quickly deep fries up to 6 servings of french fries and even roasts beef, pork, and poultry. Cooking temperatures are maintained with the Control Master® heat control.

- Heavy cast aluminum pot with tempered glass cover heats evenly.
- Nonstick finish inside and out.
- Steam/fry basket hooks onto cooker for draining.
- Fully immersible and dishwasher safe with the heat control removed.

Options™ multi-cooker/steamer
120 volts AC, 1300 watts
Stock No. 06003



Slightly smaller than the Options™, this Kitchen Kettle™ multi-cooker deep fries up to 6 servings of french fries. It makes soups and casseroles, steams vegetables, cooks rice and pasta, and even roasts meat and poultry. Cooking temperatures are maintained with the Control Master® heat control.

- Heavy cast aluminum pot with tempered glass cover heats evenly.
- Nonstick finish inside and out.
- Steam/fry basket hooks onto cooker for draining.
- Fully immersible and dishwasher safe with the heat control removed.

Kitchen Kettle™ multi-cooker/steamer
120 volts AC, 1200 watts
Stock No. 06006

*Dedicated
to canning...*

a digital pressure
canner that safely
processes low-acid
foods *and* doubles as
a boiling water canner!



Automated for simple home canning!

First digital pressure canner that meets USDA guidelines for safely processing low-acid foods such as vegetables, meat, poultry, fish, and seafood. Doubles as a boiling water canner for preserving fruits, jams, jellies, pickles, and salsa. The digital display with built-in timer **guides the user through each method**—pressure canning and boiling water canning.

- **Innovative sensor** automatically detects and holds the exact processing temperature for safe home canning for the time specified.
- No need to watch or adjust settings.
- No adjustments needed for pressure canning at high altitudes.
- Select canning method and time with digital interface.
- Includes recipes with standard processing times in accordance with USDA guidelines.
- **Removable pot** for easy cleanup.
- Includes complete **instruction/recipe book, quickstart guide,** and canning rack.
- Ten built-in **safety features** including cover locking system.
- Black stainless steel exterior.

LED display icons illuminate each step from start to completion.



Preheats jars and keeps them warm while you fill the jars with food for processing.



Maximum Mason Jar Capacity				
Method	PRESSURE CANNING		BOILING WATER CANNING	
	Regular mouth	Wide mouth	Regular mouth	Wide mouth
Half-pints	10	13*	10	7
Pints	8	7	8	7
Quarts	5	4	n/a	n/a

* It will be necessary to double-deck wide mouth half-pint jars to achieve maximum jar capacity when pressure canning.

**Presto Precise®
Digital Pressure Canner**
120 volts AC, 1485 watts
Liquid capacity: 12 quarts (11.4 liters)
Stock No. 02144



16-quart Pressure Canner

** Pints and half-pints only for boiling water method.

Liquid capacity: 16 quarts (15.1 liters)

Stock No. 01755

► Presto® Stovetop Pressure Canners

Pressure canning is the only safe method recommended by the USDA for canning low-acid foods such as vegetables, meats, poultry, and fish. The air vent/cover lock allows pressure to build only when the cover is closed properly and prevents the cover from opening until pressure is safely reduced.

- Pressure **dial gauge** registers a **complete range of processing pressures**, which is especially useful in high altitude areas.
- **Doubles as boiling water canner** for fruits, jams, pickles, and salsas.
- Works on electric, smooth-top, and gas ranges. The induction compatible Pressure Canner (Stock No. 01784) also works on induction ranges.
- Durable heavy-gauge aluminum for fast, even heating.
- Cooking/canning rack.
- Complete instruction/recipe book for canning and large-capacity pressure cooking.
- Extended 12-year limited warranty.

Quality canners you can trust,
plus knowledgeable
Consumer Service Staff
to answer your
canning questions...and
guaranteed-to-fit
Replacement Parts.

Maximum Mason Jar Capacity				
Stock No.	01755		01781 01784	
JAR TYPE	Regular Mouth	Wide Mouth	Regular Mouth	Wide Mouth
Half-pints	13	16*	26*	16*
Pints	10	8	20*	16*
Quarts	7**	7**	7	7

* It will be necessary to double-deck jars to achieve maximum jar capacity for pressure canning. Do not double deck jars for boiling water method.

** The 16-quart canner (01755) is not tall enough to use quart jars with the boiling water method.

23-quart induction compatible Pressure Canner

with stainless steel-clad base

Liquid capacity: 23 quarts (21.8 liters)

Stock No. 01784



23-quart Pressure Canner

Liquid capacity: 23 quarts (21.8 liters)

Stock No. 01781



The only full-sized
pressure canner that works
on an induction range!

➤ Premium Canning Kit



Presto® Premium Canning Kit
Stock No. 09509

This 8-function set includes a deluxe canning funnel with inner and outer collars to keep jar rims and counters clean! The funnel fits on both regular and wide mouth jars.

- Blanching basket fits in most standard pots.
- Headspace measure on both inner and outer collars of funnel.
- Wide scoop ladle conveniently hooks inside pot for easy access.
- Bubble remover has a flexible tip to release trapped air pockets.
- Lid lifter transfers clean lids to jars for hands-free placement.
- One-inch water measure for use when boiling water canning.
- Jar lifter securely grasps and lifts hot jars.



Stainless steel blanching basket



Headspace measure



Canning funnel and wide scoop ladle

Maximize efficiency and have the **best accessories** at your fingertips for successful canning!



Bubble remover multi-tool



Magnetic lid lifter



One-inch water measure



Spring-loaded jar lifter

➤ Canning Parts and Accessories



Presto® Pressure Canners and Pressure Cookers are designed to last for many years of use. Genuine Presto® replacement parts are in continuous demand because they assure exact fit and long-lasting quality. Most popular parts are available in cartons suitable for shelf or pegboard display.

Presto® Pressure Canner and Cooker Replacement Parts

This 6-piece canning kit includes a canning funnel, jar lifter, combination bubble remover/magnetic lid lifter, jar wrench, kitchen tongs, and digital timer.

- Timer counts down processing times from any setting up to 99 minutes and 59 seconds.
- Counts up for use as a stopwatch.
- Clip, easel stand, and magnet on back for versatile use.
- Heavy-duty battery included.



7-Function Canning Kit
Stock No. 09995

...it's all about the timing...



Timer shows minutes and seconds with an easy-to-read digital display. Counts down from any time up to 99 minutes and 59 seconds with an alarm that signals when time is up.

- Counts up for use as a stopwatch.
- Memory feature stores the last time setting for quick repeat use.
- Clip, easel stand, and magnet on back.
- AAA battery included.

Electronic Digital Timer
Stock No. 04213

➤ Dehydro™ Food Dehydrators



All Presto® Dehydro™ food dehydrators provide **consistent air flow** for **optimum drying** with **no tray rotation** necessary.

Dehydrate fruits, vegetables, jerky, fruit rolls, pet treats and much more!



Stock No. 06300

Trays nest for compact storage

Dehydrate in-season foods for great snacks and meal planning ingredients to use all year. Ideal for making jerky from meat or poultry.

- Top-mounted fan and heating element.
- Includes 4 trays, expandable to 8 for added drying capacity. *Add-on trays sold separately.*
- Drying trays nest when not in use, reducing storage space by 22%. Cord stores in cover.
- Preset thermostat.
- Also great for making pet treats; recipes included.
- Make delicious, nutritious fruit rolls with puréed fresh, frozen, or canned fruit. *Fruit roll sheets sold separately.*



Includes 4 trays

Dehydro™ Electric Food Dehydrator
120 volts AC, 600 watts
Stock No. 06300 (model 0630005)



Over 40% reduction in storage space



Stock No. 06301

Includes 6-trays

Dehydro™ Digital Electric Food Dehydrator
120 volts AC, 750 watts
Stock No. 06301



Stock your pantry with dehydrated foods! The digital dehydrator offers more trays and accessories for drying fruits, vegetables, jerky, fruit rolls, herbs, and more.

- Bottom-mounted fan and heating element.
- Includes 6 trays, expandable to 12 for added drying capacity. *Add-on trays sold separately.*
- Drying trays nest when not in use for over a 40% reduction in storage space. Cord stores in base.
- Digital timer and thermostat provide precise drying times and temperatures that range from 90° to 165°F.
- Includes two Fruit Roll Sheets.
- Includes two Nonstick Mesh Screens for drying small and sticky foods.

➤ Jerky Gun



Jerky Gun
Stock No. 08632

The easy way to make jerky from ground beef, venison, and other meat. Dispenses sticks or strips perfect for drying.

- Wide, easy-to-load chamber with stainless steel rod.
- Holds one pound of seasoned meat.
- Includes three interchangeable nozzles: wide strips, dual strips, and round sticks.
- Dishwasher safe.



➤ Dehydrator Accessories

Increase the capacity of your Presto® dehydrator with Add-on Nesting Dehydrator Trays. Trays nest for compact storage with a potential space savings of over 50% when all 12 trays are used.

- Number of trays varies by dehydrator model.
- Designed for use with Presto® Dehydro™ Electric Food Dehydrators; see specific model numbers.

For model 0630005
Stock No. 06315

For model 06301
Stock No. 06306



Add-on Nesting Trays
Sold in sets of two

Presto® Dehydrator Tray Capacities:

Dehydrator Stock No.	Included with Dehydrator	Expandable to Maximum
06300	4 trays	8 trays
06301	6 trays	12 trays



Fruit Roll Sheets: Sold in sets of two.

Make delicious fruit snacks with no additives or preservatives. These special fruit roll sheets use puréed fresh, frozen, or canned fruit to make healthy fruit rolls and strips. Designed to fit in the dehydrator trays of Presto® Dehydro™ Electric Food Dehydrators.

For model 0630005
Stock No. 06313

For model 06301
Stock No. 06308



Nonstick Mesh Screens: Sold in sets of two.

Nonstick Mesh Screens keep foods that get very small when dried from falling through the grates, such as herbs, berries, and carrots. These flexible mesh screens also provide easy removal of foods that stick to the grates when drying, like tomatoes and bananas. Designed to fit in the dehydrator trays of Presto® Dehydro™ Electric Food Dehydrators.

For model 0630005
Stock No. 06314

For model 06301
Stock No. 06307



➤ Electric Knife Sharpeners



Sharpen most non-serrated kitchen and sport knives with the easy **two-stage system** of the EverSharp® electric knife sharpener. It precision grinds a perfect sharpening angle, then fine hones and polishes the edge for professional results at home, anytime.

- Two-stage sharpening system.
- Sapphirite™ sharpening wheels.

EverSharp®
electric knife sharpener
120 volts AC
Stock No. 08800



The Professional EverSharp® knife sharpener features a **three-stage system with blade selector** to precisely sharpen kitchen and sport knives. The blade guides are adjustable to achieve the optimum sharpening angle for the knife being sharpened. Select thick for hunting knives, medium for standard kitchen and chef's knives, and thin for light blades like fillet and paring knives. It even sharpens santoku knives.

- Three-stage sharpening system with blade selector.
- Two Sapphirite™ grinding wheels create a precision angle.
- Extra-fine grit ceramic wheel polishes the blade.

Professional EverSharp® three-stage electric knife sharpener
120 volts AC
Stock No. 08810

Great for **singles** or college **students!**



Ramen Noodles/Eggs



Asian Dumplings/Sauce



Scrambled Eggs/Ham

Power Bento™ electric cooker
120 volts AC, 800 watts
Stock No. 04634



This **bento box-style divided electric cooker** cooks a block of ramen noodles on one side and eggs in the shell or veggies on the other side. Power Bento™ is also great for heating soup, stew, chili, and oatmeal. It makes one or two servings, perfect for dorm rooms.

- Cooks soft- or medium-cooked eggs in two-egg holder.
- Egg holder also steams vegetables and warms ham.
- Nonstick cooking surface.
- Vented cover assures proper steam for perfect cooking.
- Cover and pour spout for draining noodles.
- Spoon and fork included.
- Cord wrap for compact storage.



Air Frying...fast, **delicious**, versatile!

Digital AirDaddy® air fryer with large removable 4.2-quart basket air fries, roasts, grills, and bakes. Its convection cooking system circulates hot air for frying foods that are crispy outside and tender inside. Make fresh or frozen foods—french fries, snacks and appetizers, meats, poultry, seafood, and vegetables.

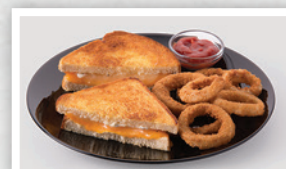
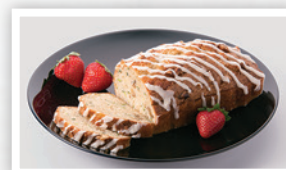
Makes french fries with up to 75% less fat

- Menu guide shows popular cooking times and temperatures.
- **Digital touch screen** and presets for fries, meat, and chicken.
- Timer signals when time is up; **automatic shut-off**.
- Cool-touch exterior.
- Pan and basket are fully immersible for cleaning.
- Built-in cord wrap for easy storage.



Digital AirDaddy® 4.2-quart electric air fryer
120 volts AC, 1500 watts
Stock No. 03422

Convection cooking system
bakes, roasts, grills
and more!



An aluminum-clad base gives this **stainless steel electric wok** fast, uniform heating for easy stir-fry cooking. The Control Master® heat control maintains the temperature automatically.

- 1500-watt heating element provides the high searing temperature needed for stir-fry cooking.
- Narrow cooking well minimizes the amount of oil needed.
- Tempered glass cover with stainless steel rim and handle.
- Long-handled wooden spatula with wide-angled edge included.
- Fully immersible and dishwasher safe with the heat control removed.

*Aluminum-clad
for fast, uniform
stir-fry cooking.*

Stainless Steel Electric Wok
120 volts AC, 1500 watts
Stock No. 05900



**Make hard-, medium-, and soft-boiled eggs
...plus poached eggs.**



Easy Store Electric Egg Cooker
12-egg boiling tray
Dual 2-egg poaching trays
120 volts AC, 500 watts
Stock No. 04633

Easy Store Electric Egg Cooker

Covered tray for **easy storage** of cooked eggs in fridge.



Simple to use! Markings on the measuring cup indicate the amount of water needed for making hard-, medium-, and soft-boiled eggs, as well as poached eggs. Just fill the water reservoir as directed. Add eggs to the desired egg tray, then cover and plug in.

- Cooks medium, large, extra-large, and jumbo eggs.
- Signal light and buzzer indicate when eggs are done.
- Includes electric nonstick water reservoir, boiling tray, poaching trays, water measuring cup, and cover.
- Cord wraps in base and all other parts nest for compact storage.
- Boiling tray and poaching trays are dishwasher safe.

► Presto® Utensils



Pizza Cutter
Stock No. 09800

- Stainless steel.
- Protective safety guard.
- Dishwasher safe.



Ice Cream Scoop
Stock No. 09801

- Stainless steel.
- Sturdy curved tip.
- Dishwasher safe.



Garlic Press
Stock No. 09803

- Stainless steel.
- Easy-to-clean removable garlic basket.
- Dishwasher safe.



Nylon Skimmer
Stock No. 09805

- Heat-resistant nylon scoop drains food from liquids.
- Stainless steel handle.
- Dishwasher safe.



Nylon Slotted Turner
Stock No. 09806

- Heat-resistant nylon turner safe for use with any cookware.
- Stainless steel handle.
- Dishwasher safe.



Basting Spoon
Stock No. 09807

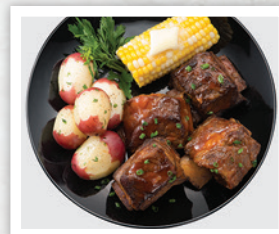
- Heat-resistant nylon spoon safe for use with any cookware.
- Stainless steel handle.
- Dishwasher safe.



Pancake Turner
Stock No. 09810

- Flexible nylon turner safe for use with any cookware.
- Stainless steel handle.
- Dishwasher safe.

The **most versatile** pot
in your cabinet—
**convenient, fast,
easy to store.**



Stovetop Pressure Cookers

High-speed pressure cooking saves time, energy, and money! Cook healthy, flavorful meals 3 to 10 times faster than ordinary cooking methods. Chicken, fish, vegetables, even grains and desserts cook to perfection. Quickly tenderizes leaner cuts of meat. Fully immersible and dishwasher safe. Available in aluminum and stainless steel models. Extended 12-year warranty.

- Pressure regulator automatically maintains the proper cooking pressure.
- The air vent/cover lock shows at a glance if there is pressure inside the cooker and prevents the cover from opening until pressure is safely reduced.
- Cooking rack allows different foods to cook at once.
- Helper handle (not available on 01241).
- Easy-to-follow instruction and recipe book.

Presto® Aluminum Pressure Cookers

Strong, heavy-gauge aluminum provides quick, even heating. Works on gas, electric, and smooth-top ranges. Available in 4-, 6-, and 8-quart sizes.



01241

4-quart Aluminum Pressure Cooker

Liquid Capacity: 4 quarts (3.8 liters)

Stock No. 01241

6-quart Aluminum Pressure Cooker

Liquid Capacity: 6 quarts (5.7 liters)

Stock No. 01264

8-quart Aluminum Pressure Cooker

Liquid Capacity: 8 quarts (7.6 liters)

Stock No. 01282 (not shown)



01264

Presto® Stainless Steel Pressure Cookers

Stainless steel pressure cookers feature a special tri-clad base consisting of a layer of aluminum between two layers of stainless steel that ensures fast, even heat distribution. These stainless cookers work on electric, smooth-top, gas, and induction ranges. Available in 4- and 6-quart sizes.



01341

4-quart Stainless Steel Pressure Cooker

Liquid Capacity: 4 quarts (3.8 liters)

Stock No. 01341

6-quart Stainless Steel Pressure Cooker

Liquid Capacity: 6 quarts (5.7 liters)

Stock No. 01362



01362



01365

6-quart Stainless Steel Pressure Cooker

Liquid Capacity: 6 quarts (5.7 liters)

Stock No. 01365



8-quart Stainless Steel Pressure Cooker
Liquid Capacity: 8 quarts (7.6 liters)
Stock No. 01370



This deluxe **8-quart pressure cooker** makes delicious meals 3 to 10 times faster than ordinary cooking methods. Meat, poultry, fish, vegetables, even grains and desserts cook to perfection fast! Gleaming stainless steel construction with a **tri-clad base** provides quick, even heating. The air vent/cover lock shows if there is pressure inside the cooker and prevents the cover from being opened until pressure is safely reduced. Extended 12-year warranty.

- Tri-clad base consists of a layer of aluminum between two layers of stainless steel.
- Works on electric, smooth-top, gas, and induction ranges.
- Pressure regulator/quick steam release lever.
- Stainless steel steamer basket.
- Easy-to-follow instruction and recipe book.

Electric Pressure Cooker Plus

The Presto® Programmable Electric Pressure Cooker Plus features 19 programmed settings including 12 pressure cooking presets. High pressure, low pressure, slow cooker, brown, sauté, and keep warm. Maintains the proper pressure automatically, then switches to keep warm. Brushed stainless steel exterior.

- Digital controls plus an LED display that counts down the remaining cooking time.
- Quick pressure release valve.
- Removable pot for easy cleaning
- Eight built-in safety features including a cover lock system.

6-quart Programmable Electric Pressure Cooker Plus
Liquid Capacity: 6 quarts (5.7 liters)
120 volts AC, 1005 watts
Stock No. 02141

Fast, easy, and automatic!



► Pancake Art Griddle

PanGogh® pancake art griddle includes a two-sided nonstick template and four batter bottles to help you create colorful pancake art. Simply fill in a template with colored pancake batter or design your own creations. Griddle features a canvas-colored nonstick surface and cool-touch surround that doubles as a frame for your pancake art!

- Griddle and batter bottles are fully immersible and dishwasher safe for easy cleaning.
- Griddle is great for fried eggs, french toast, cottage fries, and grilled cheese sandwiches.

PanGogh® pancake art griddle
120 volts AC, 1000 watts
Stock No. 07080



Includes cool-touch griddle, two fine-tipped and two standard-tipped batter bottles, and a two-sided nonstick template (lion and ice cream cone).



Draw, flip, peel, and share



➤ Electric Griddles

The **essential Presto® electric griddle** is great for breakfast, lunch, and dinner. You can count on it for perfect pancakes, grilled sandwiches, fried eggs, bacon, sausage, burgers and much more! The nonstick cooking surface with **backstop ledge** provides easy food handling and **quick cleanups**.

- Cool-touch base on the front and both sides.
- Control Master® heat control maintains the cooking temperature automatically.
- Slide-out drip tray removes for easy cleaning.
- Fully immersible with the heat control removed.

**CERAMIC
NONSTICK
SURFACE**



07055



07030

Cool-touch Electric Griddle with ceramic nonstick surface
Cooking surface: 20" x 10½" approx.
120 volts AC, 1500 watts
Stock No. 07055

Cool-touch Electric Griddle
Cooking surface: 20" x 10½" approx.
120 volts AC, 1500 watts
Stock No. 07030

Cool-touch Electric Griddle
Cooking surface: 16" x 10½" approx.
120 volts AC, 1300 watts
Stock No. 07047 (not shown)



- Adjust from a level grilling surface for eggs and pancakes to a tilted draining surface for meats by simply pulling the handles outward.
- Push the handles back in and the griddle returns to a level surface.

Tilt'n Drain™ BigGriddle® cool-touch griddle
Cooking surface: 19" x 15" approx.
120 volts AC, 1500 watts
Stock No. 07046

When less is enough...

Liddle Griddle® mini griddle

- Compact size for singles or couples.
- 8½- x 10½ -inch cooking surface is ideal for one or two servings.
- Built-in drip tray.

Liddle Griddle® mini griddle
Cooking surface: 10½" x 8½" approx.
120 volts AC, 1000 watts
Stock No. 07211



Multi-function Tray



The Griddle/Warmer Plus features a multi-function tray that **flips back** to keep cooked foods warm, **flips up** for use as a spatter shield, **swings forward** to cover food for melting and steaming, and also **removes** for use as a serving tray.

- Efficient "square" shape holds more pancakes, eggs, and sandwiches than conventional rectangular griddles.
- Fits in standard kitchen cabinets.



Cool-touch electric Griddle/Warmer Plus
Cooking surface: 14" x 15" approx.
120 volts AC, 1500 watts
Stock No. 07023

Space saving **storage solutions**

Tilt-n-Fold™ griddles offer versatility for every meal and compact storage. They easily adjust from a level nonstick cooking surface for eggs and pancakes to a tilted surface for draining meats. For easy storage, the legs fold in and the griddle fits in most standard 18-inch cabinets.

- Flip-down levers tilt the grilling surface.
- Legs fold in and drip tray locks in place for easy storage.
- Slide-out drip tray removes for easy cleaning.
- Fully immersible with Control Master® heat control removed.

Electric Tilt-n-Fold™ XL Griddle

Cooking surface: 17¾" x 14¼" approx.
120 volts AC, 1500 watts

Stock No. 07073

Family-size Electric Tilt-n-Fold™ Griddle

Cooking surface: 13¾" x 13½" approx.
120 volts AC, 1200 watts

Stock No. 07071 (shown with meat)



07073



Tilt-n-Fold™ feature



Removable handles



This extra-large electric griddle makes enough food for the entire family and features removable handles that assure easy cleaning and compact storage. Simply open the latch clips to detach the handles from the base. With the handles removed, the base stores efficiently in most standard 18-inch kitchen cabinets.

- Premium textured ceramic cooking surface provides **enhanced nonstick performance** for stick-free cooking and easier cleaning.
- Slide-out drip tray empties easily.
- Fully immersible with the Control Master® heat control removed.



**CERAMIC
NONSTICK
SURFACE**

22-inch Electric Griddle with ceramic nonstick surface

Cooking surface: 22" x 11½" approx.
120 volts AC, 1500 watts

Stock No. 07062



Low-profile slimline design



A low-profile design makes this griddle ideal for use as a buffet server and simple to store. It's great for breakfast, lunch, dinner,

and entertaining. The Control Master® heat control maintains the cooking temperature automatically. Constructed of virtually warp-proof heavy cast aluminum.

- Extra-large 22-inch nonstick cooking surface.
- Slide-out drip tray removes for easy cleanups.
- Fully immersible with the heat control removed.

22-inch Electric Slimline™ Griddle

Cooking surface: 22" x 13" approx.
120 volts AC, 1500 watts

Stock No. 07072

➤ **Indoor Electric Grill**



Enjoy delicious grilled food anytime, regardless of weather. The indoor grill features a raised-grid grilling surface and a cool-touch base on the front and both sides. Control Master® heat control automatically maintains cooking temperature.

- Raised-grid grilling surface allows fat to drip away.
- Includes a specially designed spatula/scrapper.
- Slide-out drip tray empties easily; grill is fully immersible and dishwasher safe with the heat control removed.

Cool-touch Electric Indoor Grill

120 volts AC, 1300 watts

Stock No. 09020

➤ Deep Fryers

Fry perfect french fries, onion rings, shrimp, doughnuts and more with an efficient oil-to-food ratio. The ideal frying temperature is maintained automatically for consistent results every time.

Handy scoop lifts, stirs, separates, drains, and serves. Nonstick surface, inside and out, assures easy cleaning. Snap-on lid allows oil to be conveniently stored in the fryer without spills or odor.

- Fries 6 cups of food with only 6 cups of oil.

GranPappy® electric deep fryer

Oil capacity: 1.4 liters (1.5 quarts)

120 volts AC, 1500 watts

Stock No. 05411

- Fries 4 cups of food with only 4 cups of oil.

FryDaddy® electric deep fryer

Oil capacity: .95 liter (1 quart)

120 volts AC, 1200 watts

Stock No. 05420



**Efficient
oil-to-food ratio**

A **special divider** allows the DualDaddy® deep fryer to **fry two foods at once**.

Remove the divider and the fryer's oval shape will easily accommodate extra-large batches or large pieces of chicken or fish. Its huge frying capacity allows it to quickly fry up to 8 servings of french fries.

- Preset thermostat maintains ideal frying temperature.
- Nonstick surface, inside and out.
- Scoop lifts, drains, separates, and serves.
- Snap-on lid allows oil to be stored in the fryer.

DualDaddy® electric deep fryer

Oil capacity: 1.9 liters (2 quarts)

120 volts AC, 1500 watts

Stock No. 05450



Fry crispy french fries, shrimp, chicken, and onion rings in this compact 1-liter size deep fryer with wire basket. Indicator light signals when the fryer is plugged in.

- Vented cover with built-in screen reduces odor and spattering.
- Adjustable thermostat.
- Anodized aluminum interior for fast, uniform heating.
- Brushed stainless steel exterior.

1-liter Stainless Steel Electric Deep Fryer

Oil capacity: 1 liter (1.1 quarts)

120 volts AC, 1000 watts

Stock No. 05470

➤ Professional-style Deep Fryers

Fry family-size batches or large pieces of chicken or fish in this single basket professional-style deep fryer with spatter-shield cover. An 1800-watt immersion element assures quick preheating and fast oil temperature recovery. Multi-purpose pot and fry/steam basket are also great for vegetables and seafood.

Steams and boils too!



- Big 8-cup food capacity.
- Adjustable thermostat.
- Removable heating element and enameled pot for easy cleaning.

Stainless Steel ProFry™ immersion element deep fryer

Oil capacity: 3 liters (3.2 quarts)

120 volts AC, 1800 watts

Stock No. 05461





Dual baskets for serious deep frying.

Black Stainless Steel Dual Basket ProFry™ immersion element deep fryer

Oil capacity: 4.7 liters (5 quarts)
120 volts AC, 1800 watts

Stock No. 05489

Stainless Steel Dual Basket ProFry™ immersion element deep fryer

Oil capacity: 4.7 liters (5 quarts)
120 volts AC, 1800 watts

Stock No. 05466

These professional-style deep fryers fry two foods at once or extra-large batches. With a **big 12-cup food capacity** and dual oblong-shaped baskets, they easily accommodate family-size quantities or large pieces of chicken or fish. The 1800-watt immersion element assures quick preheating and fast oil temperature recovery. Available in black stainless steel or traditional stainless steel body housing.

- Adjustable thermostat.
- Cover helps to reduce spattering.
- Signal light indicates when oil is ready for frying.
- Removable heating element and enameled pot for easy cleaning.
- Baskets and heating element nest inside pot for compact storage.

Steams and boils too!
Great for vegetables and seafood.



05489



05466

CoolDaddy® deep fryers feature a cool-touch exterior and fry up to 6 cups of food fast and easy. The exterior handle lets you **lower food into the hot oil with the cover closed** to prevent spattering. The cover also locks in place as an added measure for preventing spatters and reducing odor.

- Adjustable thermostat.
- Viewing window.
- Replaceable charcoal filter helps to absorb frying odors; replaces easily.
- Removable pot for quick and easy cleaning.

CoolDaddy® cool-touch deep fryer (black exterior)

Oil capacity: 1.9 liters (2 quarts)
120 volts AC, 1500 watts

Stock No. 05442

Cool-Touch Exterior



CoolDaddy® cool-touch deep fryer (white exterior)

Oil capacity: 1.9 liters (2 quarts)
120 volts AC, 1500 watts

Stock No. 05443





For product videos, parts,
recipes and more visit
www.GoPresto.com



PRESTO®

National Presto Industries, Inc.

3925 North Hastings Way

Eau Claire, WI 54703

tel: 715.839.2121 tf: 1.800.877.0441
fax: 715.839.2122